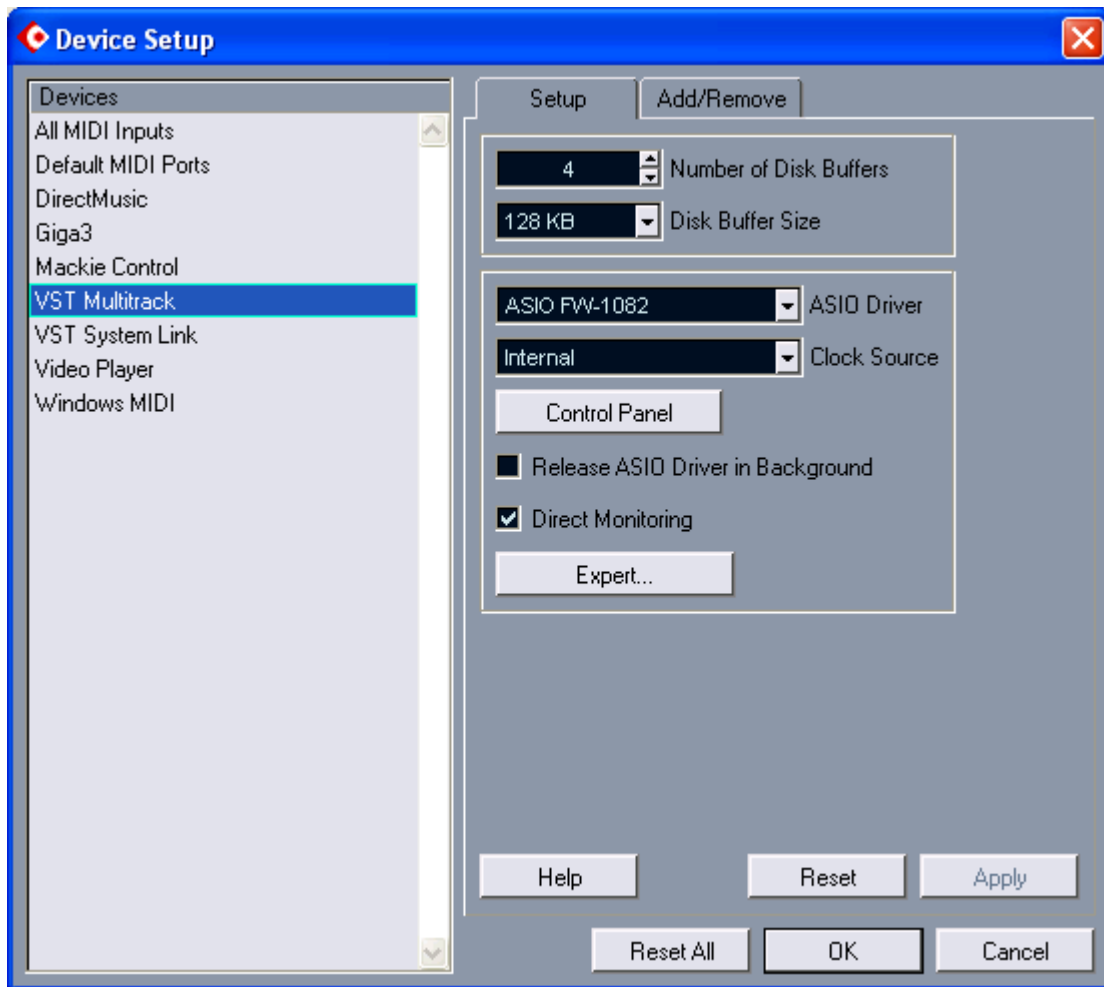


FW-1082 and Cubase LE

This document describes how to setup Cubase LE for the FW-1082 and how to use the FW-1082 features to control it.

Setup

In Cubase LE, select Devices/Device Setup ... to start setting up the audio and control surface. On the left of the “Device Setup” window, select the “VST Multitrack” device. With the “Setup” tab selected on the right, choose “ASIO FW-1082” for your ASIO Driver. The FW-1082 audio channels are now available to Cubase LE.



To set up the control surface, select the “Add/Remove” tab on the right of the “Device Setup” window. Highlight “Mackie Control” and click on the “Add” button in the bottom right. Now select the “Mackie Control” device on the left and click on the “Setup” tab. On the right select “FW1082 Control” for both “MIDI Input” and “MIDI Output.” The are also user-programmable functions for the footswitch (User A) and the F1-F4 keys (and shifted

versions). More is described about these below. You can now close the “Device Setup” window.

Press the “CONTROL PANEL” button on the FW-1082. On the “Settings” tab set the “Control Protocol” field to “Cubase LE.”

Make sure the FW-1082 inputs you need are available by going to the “Devices/VST Inputs” menu and enabling them.

You may also wish to run the FW-1082’s “SoftLCD” program to see more information about the state of the FW-1082’s controls, but this is not required.

To avoid confusion, we also recommend going to File/Preferences/Editing and unchecking “Enable Record on Selected Track”

Channel Strips

The channel strips controls directly affect the associated on-screen channel. There are also a few special controls:

REC + any SEL	toggle track’s record enable
SHIFT + any SOLO	unsolo all tracks
SHIFT + any MUTE	unmute all tracks

Note: When you SOLO a channel, Cubase LE also selects that channel.

Transport

The five main transport buttons (REW, F FWD, STOP, PLAY, RECORD) control their equivalent on-screen buttons. In addition, the buttons in this part of the FW-1082 have these functions:

SHIFT + REW	go to beginning of project
SHIFT + F FWD	go to end of project
SET + REW	undo
SET + F FWD	redo
SET + STOP	save
SET + RECORD	toggle punch in on/off
< BANK	Shift left 8 channels
BANK >	Shift right 8 channels
SHIFT + < BANK	Shift left 1 channel
SHIFT + BANK >	Shift right 1 channel
IN	go to left locator

OUT	go to right locator
SET + IN	user-programmable F5 (see below)
SET + OUT	user-programmable Shift + F5 (see below)
<< LOCATE	previous marker
LOCATE >>	next marker
SET + << LOCATE	add marker
SET + LOCATE >>	add marker

The datawheel can be used to move the timeline forwards and back. The SHTL button and light near it control CYCLE (LOOP) on/off. The arrow keys operate just like the arrow keys on your computer keyboard.

EQ/PAN/AUX

The EQ/PAN/AUX section controls always are applied to the selected track. The mode of these controls is determined by the three buttons and lights at the bottom of the section. Here's a summary of the rest of these controls:

In EQ/PAN mode:

- Press EQ band to adjust it on selected track
- Hold SHIFT to see EQ band on/off state on selected track
- Hold SHIFT and press EQ band to toggle on/off on selected track
- Turn GAIN, FREQ, Q, or PAN knob to adjust selected track (and band)
- Hold SHIFT and turn knob for fine adjustment on selected track

In AUX 1-4 mode:

- Press AUX 1-4 button to toggle on/off on selected track
- Hold SHIFT to show pre/POST state ... press AUX 1-4 buttons to toggle
- Turn AUX 1-4 knobs to adjust aux send level ... hold SHIFT for fine adjustment

AUX 5-8 mode is not available in Cubase LE.

Note: MIDI tracks do not have EQ and AUX adjustments

User Programmable Functions

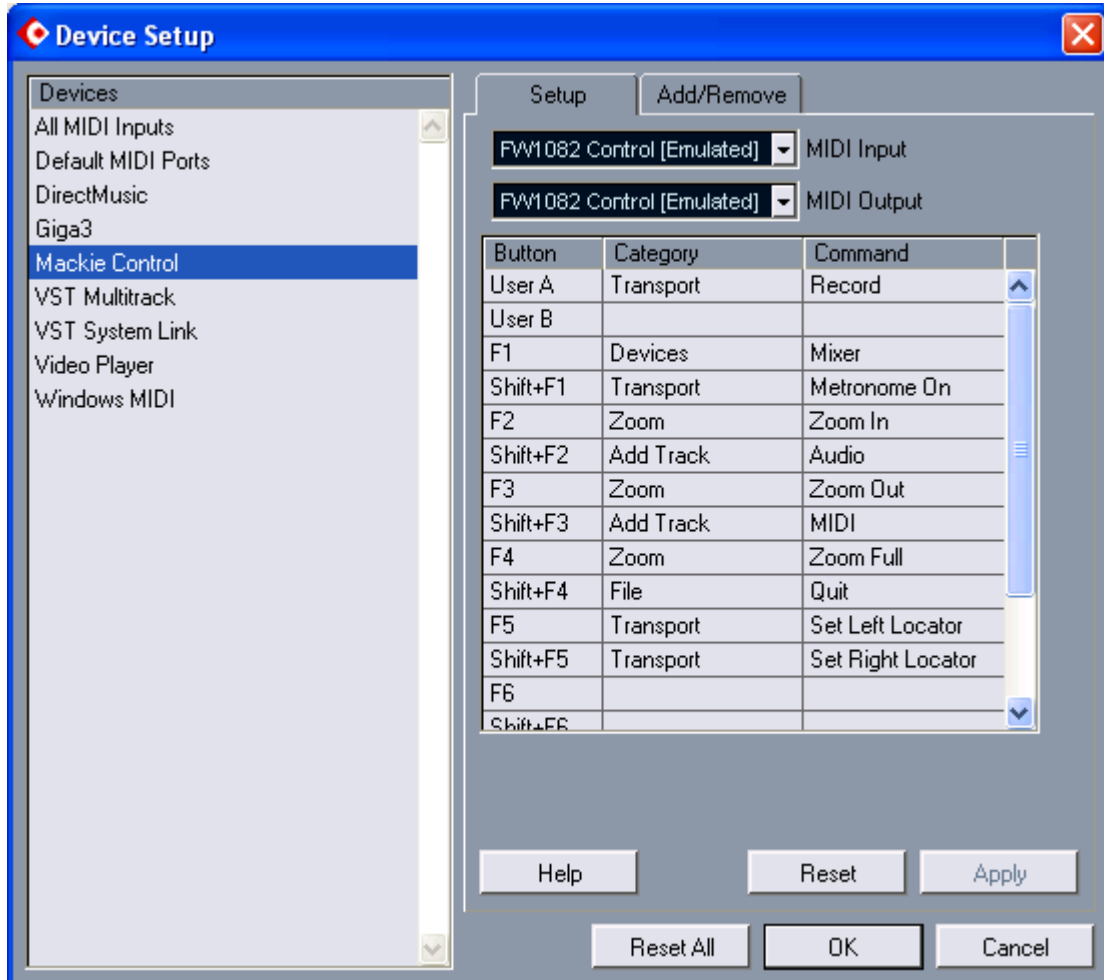
There are 9 user-programmable functions that can be used with Cubase LE. To program these, go to "Device/Device Setup ...", select "Mackie Control" on the left and the "Setup" tab on the right. You can now program the USER A (the footswitch) and F1-F4 buttons, both unshifted and shifted. There are also two other user-programmable functions that we strongly recommend mapping to the set left/right locator functions:

<u>Buttons</u>	<u>Mapped to</u>	<u>Program as</u>
SET + IN	F5	Transport/Set Left Locator

SET + OUT Shift + F5 Transport/Set Right Locator

Note that you cannot access the USER B or F6-F8 programmable functions in Cubase LE from the FW-1082.

A typical set-up might look like this:



There are *hundreds* of functions that can be applied to these buttons. Some that are particularly useful are:

- Transport/Metronome on (toggles click on/off)
- Devices/Mixers (toggle the mixer window on/off)
- Add Track/Audio
- Zoom/(various options)