

# TASCAM Hi-Res Editor

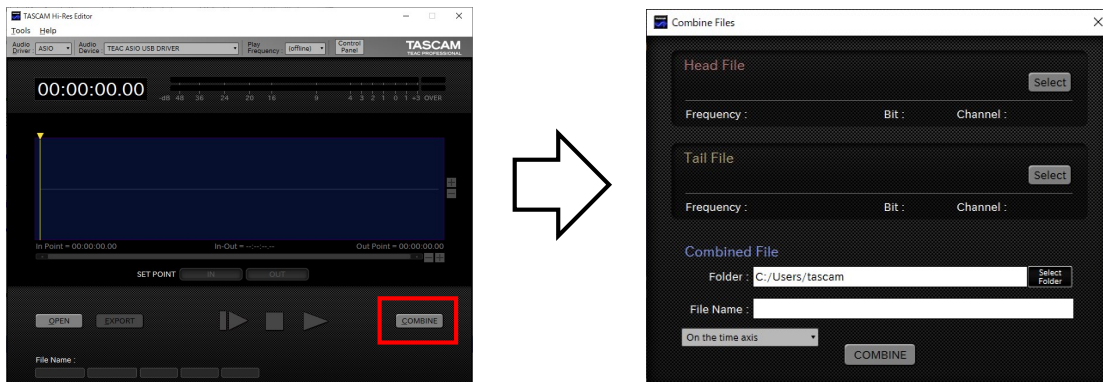
## V1.10 New Function

The following functions have been added to V1.10:

- Mono to L/R stereo conversion: two mono files can be combined to make a stereo file with respective L and R. Select the [Mono to Stereo] option on the Combine window to execute this function. (See [page 1](#))
- L/R stereo to mono split: one stereo file can be split into one L and one R file. Select the [DUAL MONO] option from the Channel pull-down menu on the Export window. (See [page 4](#))

## Combine window

Click the COMBINE button on the Home screen to open the Combine window.



The following functions can be done on this window:

- (1) On the time axis : two files can be combined at the same time axis (already existing function)
- (2) Mono to Stereo : two mono files can be combined to make a stereo file with respective L and R (new function)

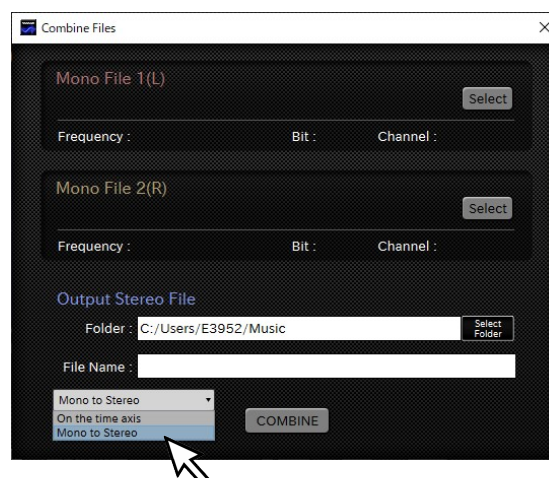
### Note

Files to be combined have to share the same audio format, sampling frequency, and quantization bit number.

New function no. 2 Mono to Stereo is explained as follows.

### **(2) Make an L/R stereo file by combining two mono files (new function)**

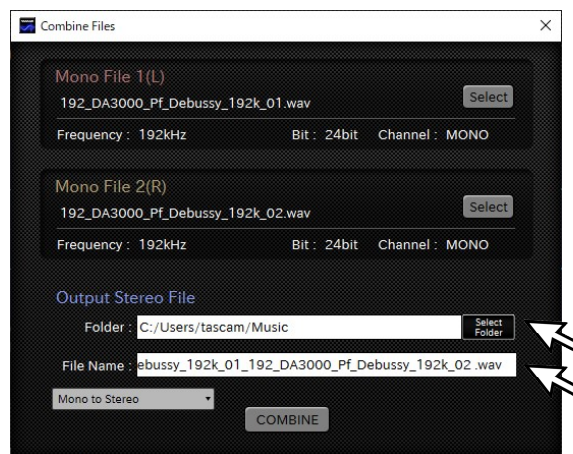
1. Select "Mono to Stereo" from the pull-down menu.



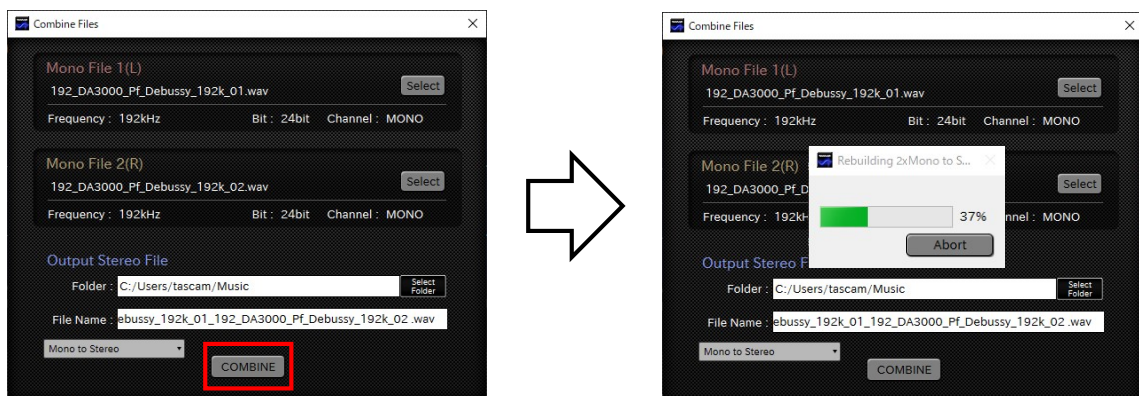
2. Select the desired left channel file to Mono File 1(L), and the right one to Mono File 2(R).



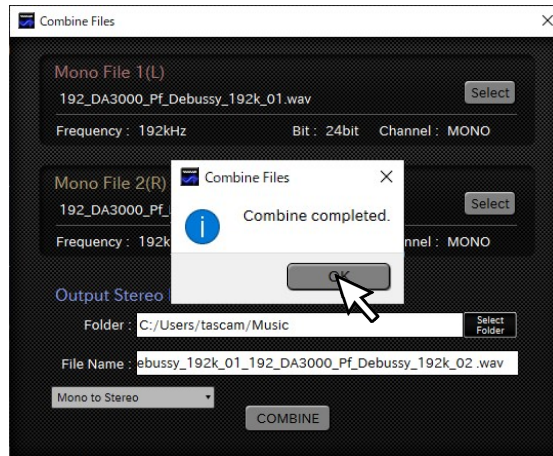
3. Choose the exporting folder and insert the file name.



4. Click the COMBINE button to start combining the files.

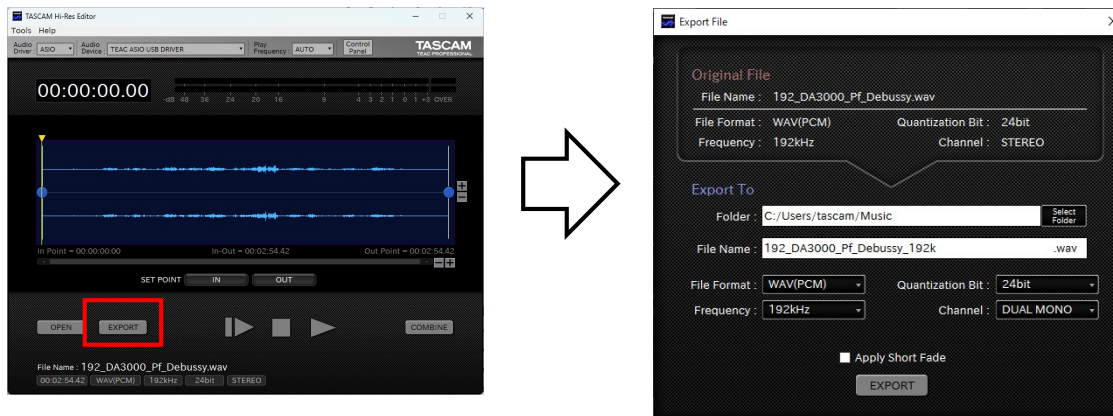


5. A message will be shown once the conversion is completed.  
Click "OK" to exit.



## Export window

Click the EXPORT button on the Home screen to open the Export window.



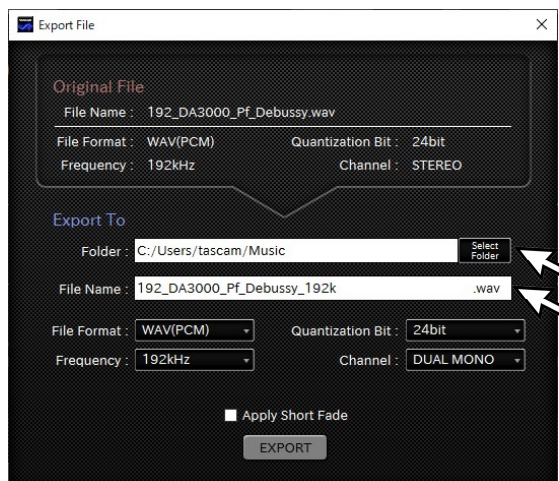
The following functions can be done on this window:

- (1) DUAL MONO : convert and export one stereo file into two single L and R files (new function)
- (2) STEREO : export stereo files (already existing function)

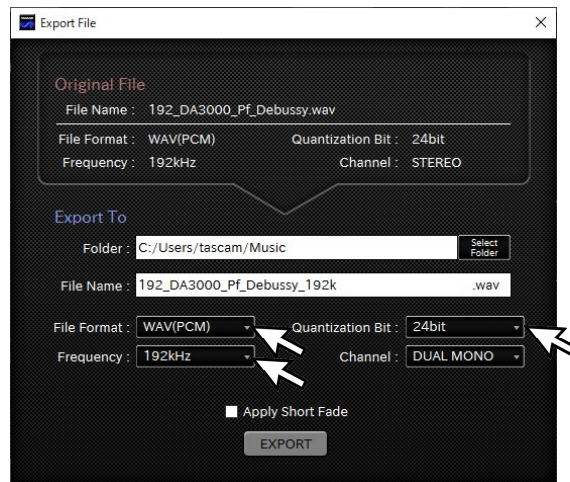
New function no. 1 DUAL MONO is explained as follows.

### **(1) DUAL MONO : Convert and export one stereo file into two single L and R files. (new function)**

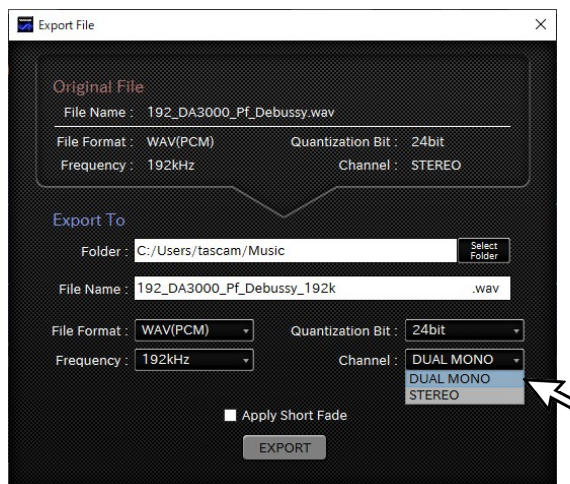
1. Choose the exporting folder and insert the file name.



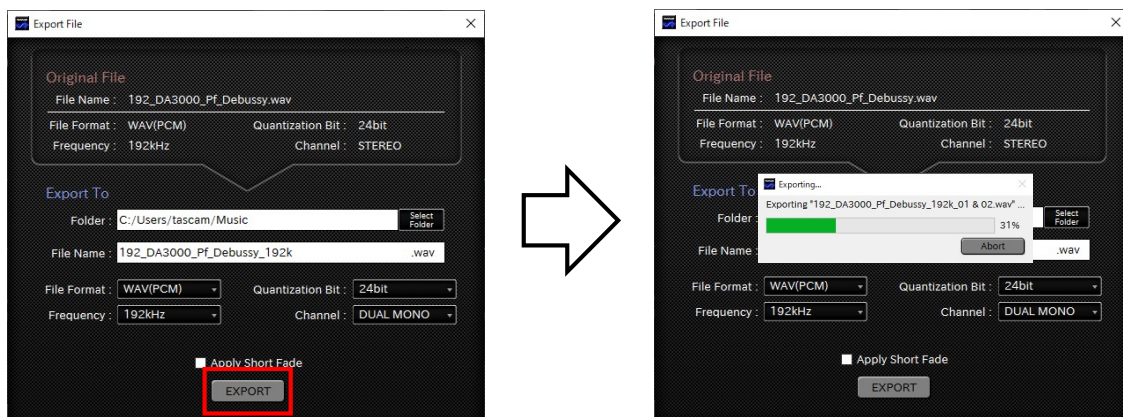
2. Select the desired file format, frequency, and quantization bit of the exporting file from the pull-down menu.



3. Select DUAL MONO from the [Channel] pull-down menu.



4. Click Export to start the exporting process.



5. A message will be shown once the export is completed.  
Click "OK" to exit.

