

TASCAM ST2110 module update manual

ATTENTION

The IF-ST2110 contains two devices. One device runs the card firmware and the other is the ST2110 module. Each has a different update procedure.

This document explains how to update the ST2110 module.

See the following for information about procedures for updating the card firmware.

Update procedures for the card firmware

The procedures are the same as for updating the firmware of expansion cards installed in SLOT 1 or SLOT 2 of a Sonicview 16/24.

See “Firmware update procedures” in the “9 – Various information displays” chapter of the Reference Manual posted on the Sonicview 16/24 product page.

Sonicview 16

https://tascam.jp/int/product/sonicview_16/support

Sonicview 24

https://tascam.jp/int/product/sonicview_24/support

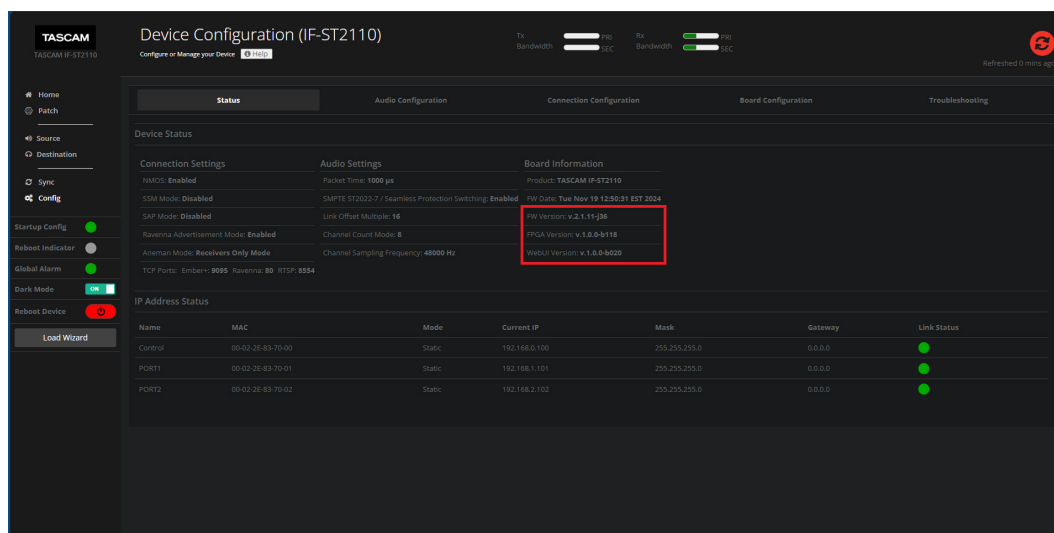
Checking the ST2110 module version

Check the ST2110 module’s version before starting to update it.

Refer to the IF-ST2110 WebUI manual for version checking procedures.

NOTE

The version of the ST2110 module can be checked on the Status page.



The screenshot shows the TASCAM Device Configuration (IF-ST2110) web interface. The 'Status' tab is selected, displaying various device settings and status information. The 'Board Information' section is highlighted with a red box, showing the following details:

- FW Version: v.2.1.11-36
- FPGA Version: v.1.0.0-0110
- WebUI Version: v.1.0.0-0020

The 'IP Address Status' table below shows the following information:

Name	MAC	Mode	Current IP	Mask	Gateway	Link Status
Control	00-02-26-83-70-00	Static	192.168.0.100	255.255.255.0	0.0.0.0	●
PORT1	00-02-26-83-70-01	Static	192.168.1.101	255.255.255.0	0.0.0.0	●
PORT2	00-02-26-83-70-02	Static	192.168.2.102	255.255.255.0	0.0.0.0	●

TASCAM ST2110 module update manual

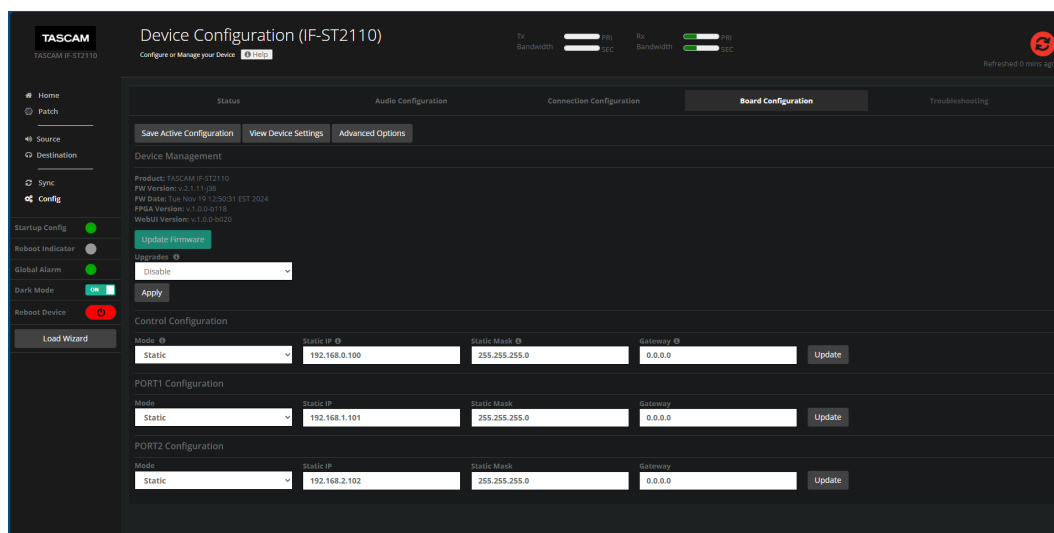
ST2110 module update procedures

Downloading the ST2110 module updater

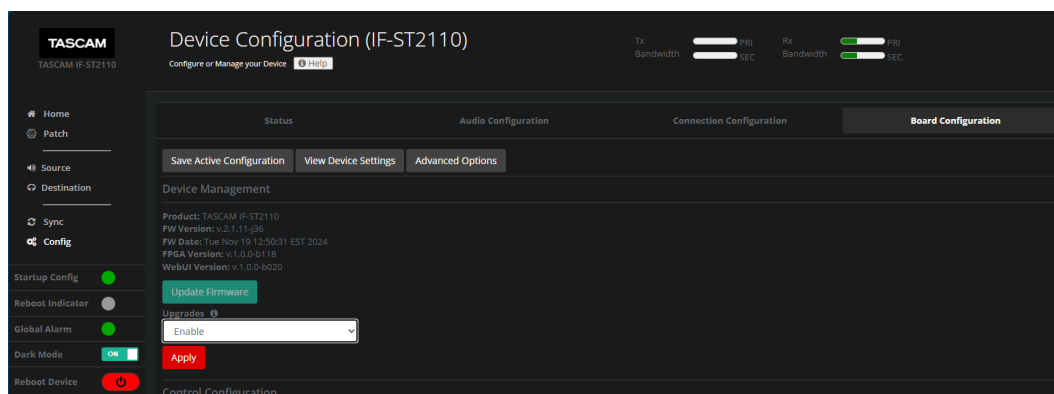
Download the latest firmware from the TASCAM website (<https://tascam.jp/int/product/if-st2110/support>). Decompress the downloaded file if it is in ZIP format or another compressed file type.

Updating the ST2110 module

1. Launch the IF-ST2110 WebUI and open the Board Configuration page.



2. If the Upgrades item is set to "Disable", select "Enable". Then, click the Apply button.
If it is already set to "Enable", proceed to step 3.

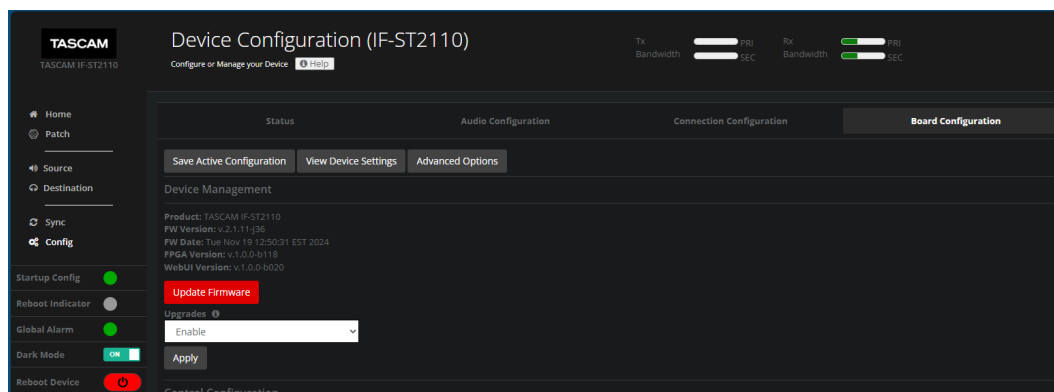


TASCAM ST2110 module update manual

- Click the Update Firmware button to open the Firmware Upgrade Screen.

NOTE

The Firmware Upgrade Screen will open on a new page.



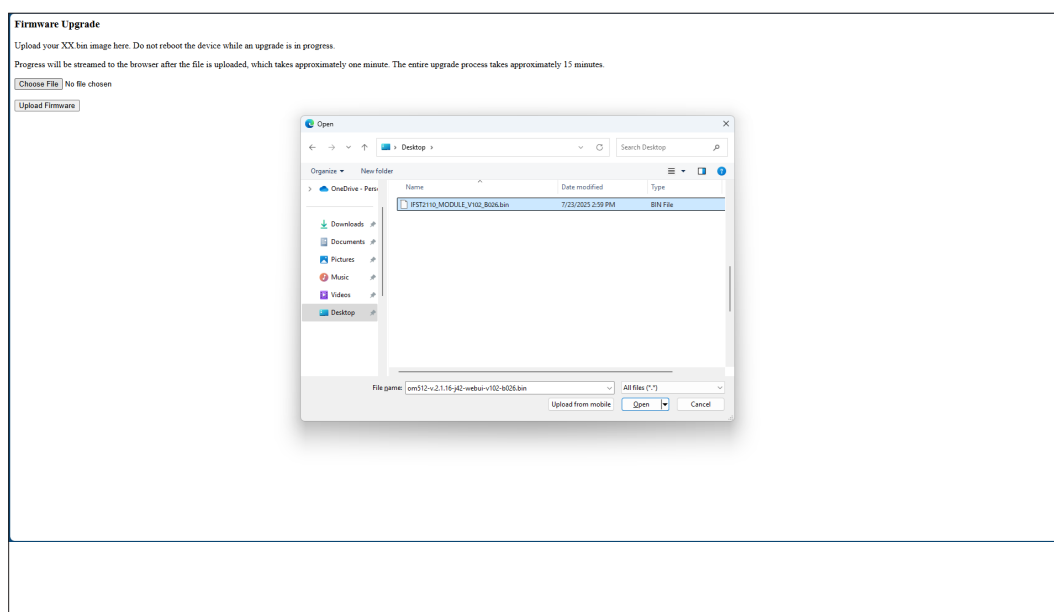
Firmware Upgrade

Upload your XX.bin image here. Do not reboot the device while an upgrade is in progress.

Progress will be streamed to the browser after the file is uploaded, which takes approximately one minute. The entire upgrade process takes approximately 15 minutes.

No file chosen

- Click the file selection button, and select the downloaded and decompressed updater file for the ST2110 module. Then, click the "Open" button.

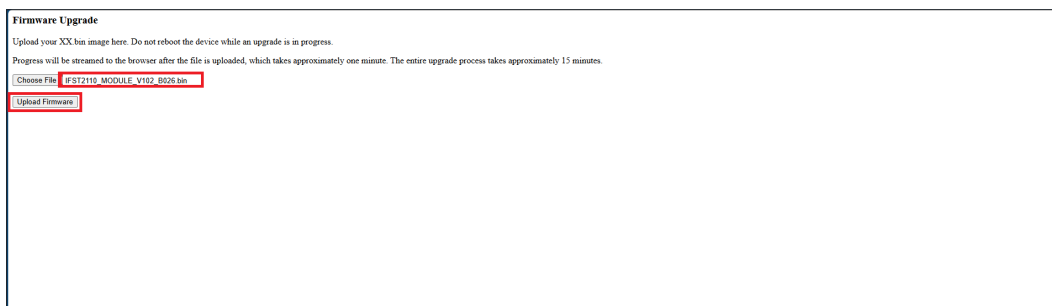


TASCAM ST2110 module update manual

5. After confirming that the correct updater has been selected, click the Upload Firmware button. Please wait until the update completes.

NOTE

Updating the ST2110 module takes about one minute.



When the update completes successfully, the following message will appear.



Scroll to the end of the message and confirm that “Status: OK Upgrade complete - board will reboot automatically” appears. Close the screen after confirming this.

ATTENTION

Be very careful of the following when updating.

- Do not turn off the power of the Sonicview, the computer or the router.
- Do not disconnect LAN cables.
- Prevent the computer from going to sleep by checking energy savings settings in advance.

Failure to follow these precautions could cause the IF-ST2110 card to become unstartable.

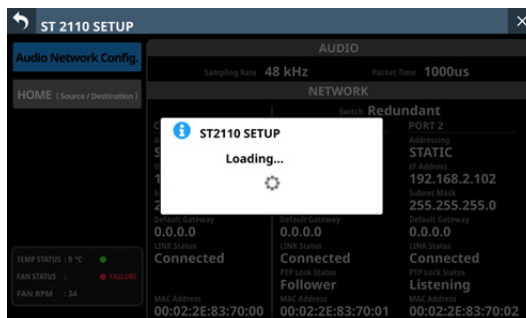
After updating completes, the IF-ST2110 card will restart automatically.

While the IF-ST2110 card is restarting, the following message will appear on the Sonicview ST2110 SETUP Screen.

The message will disappear when the IF-ST2110 has restarted.

NOTE

Restarting the IF-ST2110 module takes about two and a half minutes.



TASCAM ST2110 module update manual

After the IF-ST2110 card restarts, confirm that the latest version is being used (see “Checking the ST2110 module version” on page 1).

This completes updating the ST2110 module.

The screenshot displays the TASCAM Device Configuration (IF-ST2110) web interface. The interface is divided into several sections:

- Header:** TASCAM logo, "Device Configuration (IF-ST2110)", and a "Configure or Manage your Device" button.
- Left Sidebar:** Navigation menu with options: Home, Patch, Source, Destination, Sync, Config, Startup Config, Reboot Indicator, Global Alarm, Dark Mode, Reboot Device, and Load Wizard.
- Main Content Area:**
 - Status Tab:** Active tab showing Device Status, Connection Settings, Audio Settings, Board Information, and IP Address Status.
 - Device Status:** Overview of the device's operational state.
 - Connection Settings:** Includes NMOS (Enabled), SSM Mode (Disabled), SAP Mode (Disabled), Ravenna Advertisement Mode (Enabled), and Arachnoid Mode (Receivers Only Mode).
 - Audio Settings:** Includes Packet Time (1000 µs), SMPTE ST2022-7 / Seamless Protection Switching (Enabled), Link Offset Multiple (16), Channel Count Mode (8), and Channel Sampling Frequency (48000 Hz).
 - Board Information:** A red box highlights this section, showing:
 - FW Version: v.2.1.16442
 - FPGA Version: v.1.0.0-118
 - HubID Version: v.1.0.2-6626
 - IP Address Status:** A table showing the IP addresses and link status for the device's ports.

Name	MAC	Mode	Current IP	Mask	Gateway	Link Status
Control	00-02-2E-43-70-00	Static	192.168.0.100	255.255.255.0	0.0.0.0	●
PORT1	00-02-2E-43-70-01	Static	192.168.1.101	255.255.255.0	0.0.0.0	●
PORT2	00-02-2E-43-70-02	Static	192.168.2.102	255.255.255.0	0.0.0.0	●