

## 2-Channel DSD/PCM Master Recorder with AD/DA Converter

The ideal solution for recording studios



<b>Analog In/Out</b>	XLR   RCA	<b>Digital In/Out</b>	S/PDIF   AES/EBU   SDIF-3   DSD-raw	<b>Supported Media</b>	SD [Max 512GB]   USB [Playback/Copy]
----------------------	-----------	-----------------------	-------------------------------------	------------------------	--------------------------------------

### Stereo Master Recorder with AD/DA Converters

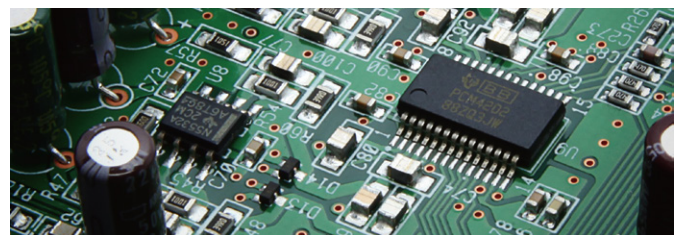
Following in its critically acclaimed predecessors footsteps, the DA-3000SD is a must-have master recorder and professional grade monitoring device in a single rack mountable unit. Bouncing a recording in a DAW alone cannot capture the quality afforded by the DA-3000SD as a master recorder. When used as an AD/DA conversion unit in a DAW production environment, noise free superior monitoring is second-to-none as the clarity and depth of audio is enhanced and allowed to shine.

### Masterful Audio with PCM, DSD Recording



For recording, the DA-3000SD supports audio capture at 192 kHz for PCM as well as 2.8 and 5.6 MHz for DSD, the highest quality recording format commercially available. Recording directly to SD card media makes transportation and storage of sessions simple and easy-to-handle.

### Full Balanced Circuit with Dual Monaural Configuration



The output circuitry uses a dual monaural configuration that eliminates interference between the left and right channels, maximizing the performance of the DA-3000SD to achieve unrivaled sound quality. The D/A conversion is handled by the renowned BurrBrown PCM1795 converters, one for each channel. Other components include low-impedance capacitors and low-noise, high-precision resistors. Meticulous care was taken in selecting parts to bring the highest quality sound to the DA-3000SD.

### Features

- AD/DA direct mode can be used as a phase coherent pure standalone AD/DA converter
- Premium isolated BurrBrown PCM1795 converters, one for each channel
- Automatic file closing function to prevent the loss of recorded data
- Equipped with 128x64 dots OLED display
- Mark function
- Panel Lock function
- Dedicated USB keyboard terminal for external control
- Oscillator function

- Outputs volume control
- USB memory for playback or mutual copying with SD cards
- Supports wireless remote control (RC-10)
- Support SDXC (up to 512G)

Recording Time	128 GB	256 GB	512GB
PCM 48kHz/24bit	117H 20Min	234H 40Min	469H 20Min
PCM 192kHz/24bit	27H 44Min	55H 28Min	110H 56Min
DSD 5.6MHz	23H 28Min	46H 56Min	93H 52Min

**Wide range of input and output terminals** Analog : XLR, RCA, Digital : S/PDIF, AED/EBU, SDIF-3, DSD-raw, WORD IN, OUT/THRU, AC IN





# DA-3000SD

For more product details or case studies, visit our website. ▲

## Supported Media

SD	SDHC card (4GB~32GB), SDXC card (64GB~512GB) Media ejection method: Push-push type
USB	USB flash drive *Only playback and file copying with SD card are supported.

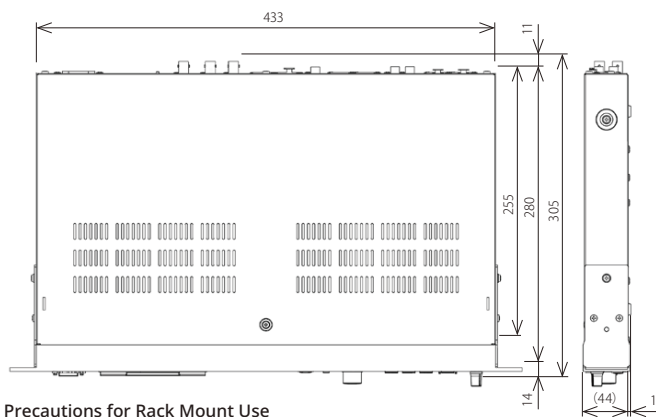
## Recording and Playback Format

PCM	44.1k/48k/88.2k/96k/176.4k/192kHz, 16bit/24bit
Recording	BWF (.wav)
Playback	BWF (.wav), WAV (.wav)
DSD	2.8224/5.6448 MHz
Rec and Play	DSDIFF (.dff), DSF (.dsf)
Number of channels	2ch (Stereo/Mono x2)

## Audio performance

<b>Recording</b>	
Frequency Response	
PCM	20Hz~20kHz (+0.1dB/-0.5dB, Fs=44.1k/48kHz, JEITA) 20Hz~40kHz (+0.1dB/-1dB, Fs=88.2k/96kHz, JEITA) 20Hz~80kHz (+0.1dB/-6dB, Fs=176.4k/192kHz, JEITA)
DSD	20Hz~50kHz (+0.1dB/-3dB, DSD, JEITA) 20Hz~100kHz (+0.1dB/-12dB, DSD, JEITA)
Distortion	0.003% or less (Ref: -16dB/BALANCED, JEITA) 0.005% or less (UNBALANCED, JEITA)
S/N Ratio	
PCM	113dB or more (24bit, Ref: -20dB/BALANCED, JEITA) 111dB or more (24bit, UNBALANCED, JEITA)
DSD	106dB or more (Ref: -20dB/BALANCED, AES-17 20k LPF) 104dB or more (UNBALANCED, AES-17 20k LPF)
Crosstalk	105dB or more (1kHz, JEITA)

<b>Playback</b>	
Frequency Response	
PCM	20Hz~20kHz (±0.1dB, Fs=44.1k/48kHz, JEITA) 20Hz~40kHz (+0.1dB/-0.3dB, Fs=88.2k/96kHz, JEITA) 20Hz~80kHz (+0.1dB/-3dB, Fs=176.4k/192kHz, JEITA)
DSD	20Hz~50kHz (+0.1dB/-3dB, DSD, JEITA) 20Hz~100kHz (+0.1dB/-12dB, DSD, JEITA)
Distortion	0.003% or less (Ref: -16dB/BALANCED, JEITA) 0.001% or less (UNBALANCED, JEITA)
S/N Ratio	
PCM	118dB or more (Ref: -20dB/BALANCED, JEITA) 16dB or more (UNBALANCED, JEITA)
DSD	116dB or more (Ref: -20dB/BALANCED, AES-17 20k LPF) 114dB or more (UNBALANCED, AES-17 20k LPF)



**Precautions for Rack Mount Use**  
When rack-mounting or stacking the units, ensure that there is at least 1U of clearance on top of the unit for heat dissipation.

## Spec description

<b>Inputs</b>	
Analog (Unbalance)	
Connector	RCA pin jacks
Input Level	Normal : -10dBV, Max : +6dBV, Minimum : -22dBV
Input impedance	22kΩ or more
Analog (Balance)	
Connector	XLR-3-31 (1 : GND, 2 : HOT, 3 : COLD)
Nominal Input Level	+4dB, +6dBu (at Max Input Level set to +15dBu)
Max Input Level	+15dBu, +18dBu, +20dBu, +22dBu, +24dBu
Minimum input level	-8dBu, -6dBu (at Max Input Level set to +15dBu)
Input Impedance	10kΩ or more
S/PDIF, CASCADE (Unbalance)	
Connector	RCA pin jacks
Format	IEC60958-3(S/PDIF)
Input Frequency	
SRC OFF	44.1/48/88.2/96/176.4/192kHz
SRC ON	32~216kHz
Allowable Frequency Deviation	±100ppm (SRC OFF)
AES/EBU (Balance)	
Connector	XLR-3-31 (1 : GND, 2 : HOT, 3 : COLD)
Format	AES3-2003/IEC60958-4 (AES/EBU)
Input Frequency	
SRC OFF	44.1/48/88.2/96/176.4/192kHz
SRC ON	32~216kHz (SRC ON)
Allowable Frequency Deviation	±100ppm (SRC OFF)
SDIF-3 (Unbalance)	
Connector	BNC Connector x 2 (L/R)
Format	SONY SDIF-3/DSD-raw
Clock Frequency	44.1kHz
<b>Output</b>	
Analog (Unbalance)	
Connector	RCA pin jacks
Output Level	Normal : -10dBV, Max : +6dBV
Output Impedance	200Ω or less
Analog (Balance)	
Connector	XLR-3-32 (1 : GND, 2 : HOT, 3 : COLD)
Nominal Output Level	+4dB, +6dBu (at Max Input Level set +15dBu)
Max Output Level	+15dBu, +18dBu, +20dBu, +22dBu, +24dBu
Output Impedance	100Ω or less
S/PDIF, CASCADE (Unbalance)	
Connector	RCA pin jacks
Format	IEC60958-3 (S/PDIF)
AES/EBU (Unbalance)	
Connector	XLR-3-32 (1 : GND, 2 : HOT, 3 : COLD)
Format	AES3-2003/IEC60958-4 (AES/EBU)
SDIF-3 (Unbalance)	
Connector	BNC Connector x 2 (L/R)
Format	SONY SDIF-3/DSD-raw
Clock Frequency	44.1kHz
<b>WORD SYNC IN</b>	
Connector	BNC Connector
Input level	5V TTL equivalent
Input Frequency	44.1k/48k/88.2k/96k/176.4k/192kHz
Allowable Frequency Deviation	±100ppm
<b>WORD SYNC THRU/OUT</b>	
Connector	BNC Connector
Output Level	5V TTL equivalent
Output Impedance	75Ω +/-10%
Output Frequency	44.1k/48k/88.2k/96k/176.4k/192kHz
Frequency Stability	±1ppm or less (Ta=25°C)
<b>USB(PLAY/COPY)</b>	
USB(REMOTE)	USB Type-A (USB2.0 High-speed 480Mbps, DC5V 0.5A)
<b>Headphone Output</b>	USB Type-A (USB1.1 Full-speed 12Mbps, DC5V 0.2A)
<b>Power Supply</b>	6.3mm (1/4") Stereo Phone Jack, 45mW + 45mW (32Ω load)
<b>Dimensions, Weight</b>	AC120V (for North America), AC230V
<b>Bundled Items</b>	483 × 45 × 305 mm (WxHxD), 4.1 kg
	DA-3000SD x1, Power cord (3P) x1, RC-10 x1
	Lithium coin cell battery (CR2025) x1, A rack-mounting screw kit x1, Owner's Manual (including warranty) x1

Please note that not all models and colors are available in every country. Design and specifications subject to change without notice. ©2024 TEAC corporation. All Right Reserved. All text, images, graphics and other materials on this brochure are subject to the copyright and other intellectual property right of TEAC Corporation. These materials shall not directly or indirectly be published, reproduced, modified or distributed in any medium. TEAC and TASCAM are trademarks or registered trademarks of TEAC Corporation. The Bluetooth® word mark and logos are registered trademarks owned by Bluetooth SIG, Inc. and any use of such marks by TEAC Corporation is under license. Other brands and product names are trademarks or registered trademarks of respective owners.

Authorized Distributors



**TEAC CORPORATION**  
1-47, Ochiai, Tama-shi, Tokyo 206-8530, Japan <https://tascam.jp/int> ▲